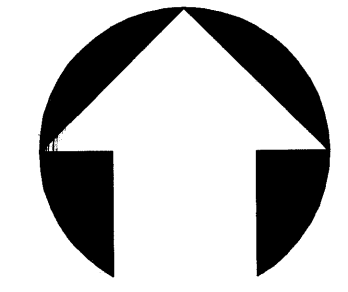


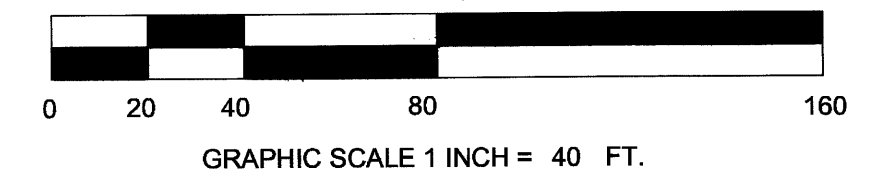
A Plat of

SAVANNA DAKS

Being a Subdivision of the Northeast one-quarter (NE 1/4) of the Northeast one-quarter (NE 1/4) of the Northeast one-quarter (NE 1/4) of Section 21, Township 37 South, Range 41 East, Martin County, Florida



North



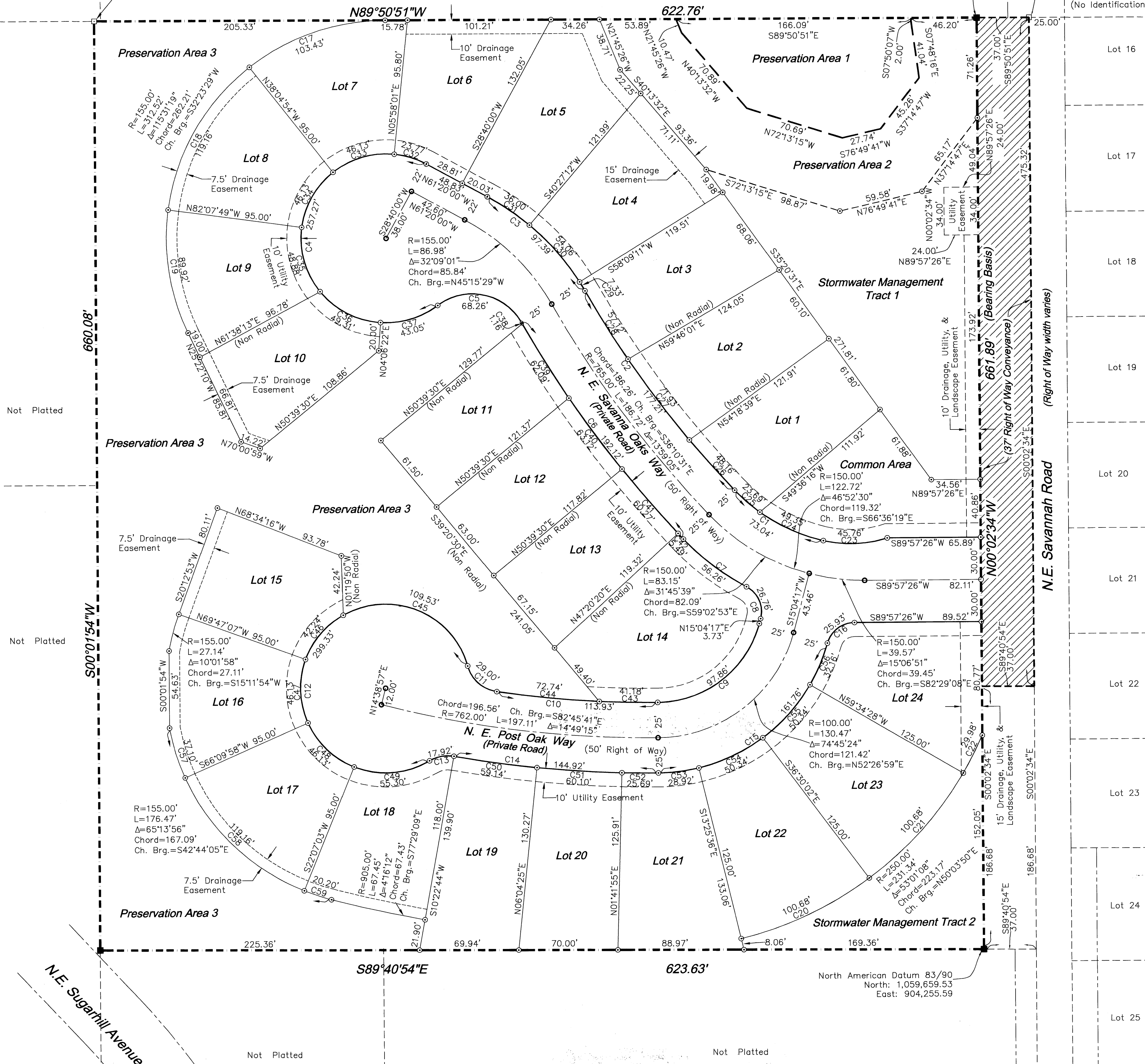
Sugarhill
P.B. 07, Pg. 78
Lot 1

Benchmark
Elevation=26.02 Feet
NGVD 1929
Found 4"x4" Concrete
Monument
"#1272"

Not Platted

North American Datum 83/90
North: 1,060,321.43
East: 904,255.10

Benchmark
Elevation=19.12 Feet
NGVD 1929
NE Corner of Section
21, Township 37 South,
Range 41 East
Found 4"x4" Concrete
Monument
(No Identification)



Pitchford Minor Plat
No. 1
(Not Included Portion)
Plat Book 05, Page 68

Curve Table				
Curve	Length	Radius	Delta	Chord
C1	73.04'	125.00'	33°28'44"	72.01'
C2	177.21'	740.00'	13°43'15"	176.79'
C3	97.37'	175.00'	31°53'12"	96.14'
C4	257.27'	60.00'	245°40'22"	100.83'
C5	68.26'	40.00'	97°46'20"	60.27'
C6	192.12'	790.00'	13°56'01"	191.65'
C7	56.26'	175.00'	18°25'07"	56.01'
C8	26.76'	20.00'	76°39'27"	24.81'
C9	97.86'	75.00'	74°45'24"	91.06'
C10	113.93'	737.00'	8°51'24"	113.81'
C11	29.00'	25.00'	66°27'57"	27.40'
C12	299.33'	60.00'	285°50'31"	72.35'
C13	17.92'	25.00'	41°04'13"	17.54'
C14	144.92'	787.00'	10°33'03"	144.72'
C15	161.76'	125.00'	74°08'36"	150.70'
C16	25.93'	20.00'	74°16'21"	24.15'
C17	103.43'	155.00'	38°14'03"	101.53'
C18	119.16'	155.00'	44°02'55"	116.25'
C19	89.92'	155.00'	33°14'21"	88.66'
C20	100.68'	250.00'	23°04'26"	100.00'
C21	100.68'	250.00'	23°04'26"	100.00'
C22	29.98'	250.00'	6°52'16"	29.96'
C23	45.76'	85.00'	30°50'44"	45.21'
C24	49.35'	125.00'	22°37'12"	49.03'
C25	23.69'	125.00'	10°51'33"	23.66'
C26	48.16'	740.00'	3°43'44"	48.15'
C27	71.93'	740.00'	5°34'10"	71.90'
C28	57.12'	740.00'	4°25'22"	57.11'
C29	7.33'	175.00'	2°24'01"	7.33'
C30	54.06'	175.00'	17°41'59"	53.85'
C31	36.00'	175.00'	11°47'12"	35.94'
C32	23.77'	60.00'	22°41'59"	23.62'
C33	46.13'	60.00'	44°02'55"	45.00'
C34	46.13'	60.00'	44°02'55"	45.00'
C35	48.88'	60.00'	46°40'46"	47.54'
C36	49.31'	60.00'	47°05'03"	47.93'
C37	43.05'	60.00'	41°06'44"	42.13'
C38	1.16'	790.00'	0°05'03"	1.16'
C39	62.09'	790.00'	4°30'10"	62.07'
C40	63.12'	790.00'	4°34'40"	63.10'
C41	60.27'	790.00'	4°22'16"	60.25'
C42	5.49'	790.00'	0°23'52"	5.49'
C43	41.18'	737.00'	3°12'06"	41.18'
C44	72.74'	737.00'	5°39'18"	72.71'
C45	109.53'	60.00'	104°35'50"	94.94'
C46	42.24'	60.00'	40°20'20"	41.38'
C47	46.13'	60.00'	44°02'55"	45.00'
C48	46.13'	60.00'	44°02'55"	45.00'
C49	55.30'	60.00'	52°48'31"	53.36'
C50	59.14'	787.00'	4°18'19"	59.12'
C51	60.10'	787.00'	4°22'31"	60.08'
C52	25.69'	787.00'	1°52'14"	25.69'
C53	28.92'	125.00'	13°15'18"	28.85'
C54	50.34'	125.00'	23°04'26"	50.00'
C55	50.34'	125.00'	23°04'26"	50.00'
C56	32.16'	125.00'	14°44'26"	32.07'
C57	37.10'	155.00'	13°42'55"	37.01'
C58	119.16'	155.00'	44°02'55"	116.25'
C59	20.20'	155.00'	7°28'06"	20.19'

NOTES
1. Benchmark elevations as shown are reference to the National Geodetic Vertical Datum of 1929 (N.G.V.D. 29), and are referenced to the Martin County Benchmark stamped JBS-1 Martin County 1984, elevation 18.333.

2. Bearings refer to the West Right of Way Line of N.E. Savannah Road, having a Bearing of N00°02'34"W

3. All lot lines on curves are Radial unless otherwise noted.

4. Coordinates shown hereon are based upon the North American Datum of 1983/1990 Adjustment, State Plane Transverse Mercator Projection, Florida East Zone, US Survey Feet Units..

5. The National Flood Insurance Program designation as indicated on the F.E.M.A. Map Panel No. 12085C0151 F, Dated October 4, 2002, Locates the parcel in Zone X, subject to any scaling and interpolation factors associated with mapping of this accuracy.

6. In the event that Martin County disturbs the surface of a private street due to maintenance, repair or replacement of a public improvement located therein, then the county shall be responsible for restoring the street surface only to the extent which would be required if the street were a public street, in accordance with county specifications.

LEGEND AND ABBREVIATIONS
 ○ = Set P.C.P. (Permanent Control Point), a Set P.K. Nail with Disk Stamped "ASLAN, Inc. P.S.M. 3336".
 ⊙ = Set P.C.P. (Permanent Control Point), a Set 5/8" Iron Rod with Cap Stamped "ASLAN, Inc. P.S.M. 3336".
 ■ = Set Permanent Reference Monument, a Set 4"x4" Concrete Monument and Disk Stamped "ASLAN, Inc. P.S.M. 3336".

NGVD = National Geodetic Vertical Datum
 F.E.M.A. = Federal Emergency Management Agency

P.K. Nail = Parker-Kalon Nail
 R. = Arc Radius
 L. = Arc Length
 Δ = Arc Included Angle

Ch. Brg. = Arc Chord Bearing
 P.S.M. = Professional Surveyor and Mapper

NOTICE
1. This plat, as recorded in its original form in the public records, is the official depiction of the subdivided lands described hereon and will in no circumstances be supplanted in authority by any other form of the plat, whether graphic or digital. There may be additional restrictions that are not recorded on this plat that may be found in the public records of this county.

PREPARED BY: Eric B. Holly, P.S.M.

ASLAN, INC.
 CONSULTANTS • PLANNERS SURVEYORS
 LAND INFORMATION SERVICES
 2440 S.E. Federal Highway - Suite 700
 Stuart, FL 34994 772.288.4880 Fax 288.0128